

Flow Iron Fittings

Reliable fittings for well service applications

 **Working pressure:**
up to 15,000 psi [103 MPa]

 **Sizes:**
2 or 3 in

Applications

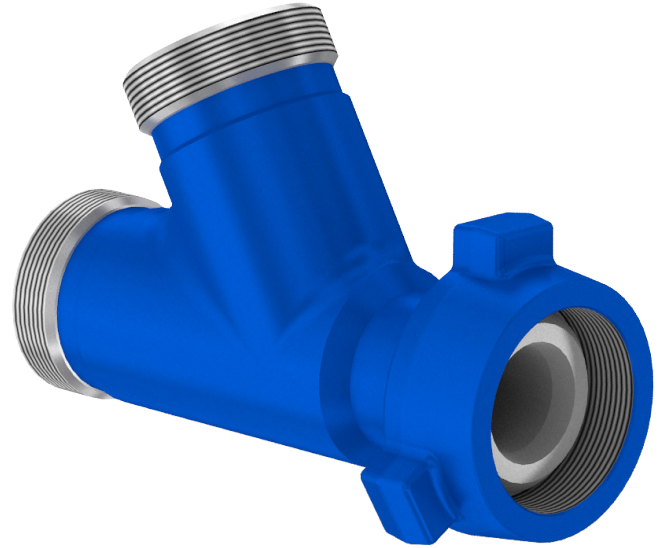
Hydraulic fracturing, cementing, well testing, and flowback

How it improves wells

Flow iron fittings from Cameron deliver maximum total lifecycle cost savings, even in the oil and gas industry's most demanding applications. For all of your flow iron requirements, from high-stage-count hydraulic fracturing to cementing, well testing, and even abrasive flowback, you can count on Cameron for high reliability and low cost.

Additional information

Cameron offers elbows, laterals, tees, and cross fittings in standard 2- and 3-in sizes with standard 1502 hammer wing unions.



Cameron 2-in M x M x F flow iron tee fitting.

Flow Iron Fittings Specifications

Size	Configuration	Hammer Union	Style	Bore Diameter, in	Working Pressure, psi
3 in x 3 in x 2 in with 16-in overall length	F x M x F	1502	Tee	2.735	15,000
3 in x 3 in x 2 in with 16.75-in overall length	F x M x F	1502	Tee	2.735	15,000
2 in	M x M x M	1502	Tee	1.865	15,000
2 in	F x M x F	1502	Tee	1.865	15,000
2 in	F x F x M	1502	Tee	1.865	15,000
2 in	F x F x F	1502	Tee	1.865	15,000
2 in	F x M x M	1502	Tee	1.865	15,000
2 in	M x M x F	1502	Tee	1.865	15,000
3 in	M x F x M	1502	Tee	2.735	15,000
3 in	M x F x F	1502	Tee	2.735	15,000
2 in	F x M x F	1502	Lateral	1.865	15,000
3 in	M x F x F	1502	Lateral	2.735	15,000
2 in	M x M	1502	Elbow	1.865	15,000
2 in	F x F	1502	Elbow	1.865	15,000
2 in	M x F	1502	Elbow	1.865	15,000
3 in	M x F	1502	Elbow	2.735	15,000
2 in	F x F x F x M	1502	Cross	1.865	15,000

All specifications are subject to change without notice.